



expromo **CINEMA**

EXPERIENCE THE **FUTURE** OF CINEMA



About Expromo Cinema

We believe that Expromo Cinema products are redefining the future of cinema. Our products deliver an unparalleled viewing experience and offer cinema owners reduced maintenance, increased seating capacity, and cost efficiency.

Experience the incredible image quality that sets new industry standards. In partnership with our LED screen manufacturer, we bring you extraordinary specifications and breathtaking technology.

Our screens not only meet but exceed DCI certification requirements, ensuring superior performance.

Among millions of pixels – we deliver wonderful installations that last and has an attractive total cost of ownership. At Expromo Cinema, we are on a mission to surpass expectations and transform the cinematic experience.

Product Features

Experience Clarity Like Never Before



Ultra Wide Brightness Range

Excellent linearity across the entire brightness range and a brightness range that extends to the maximum possible.



Ultra High Contrast Ratio

LED screen technology exhibits none of the murky dark gray artifacts that are inherently present in projectors. When it comes to displaying black, LED screen technology delivers true black.



75% Pixel Fill Factor

With a pixel fill factor of over 75%, our screens optimize image clarity and reduce visible pixel structure, contributing to a more cohesive viewing experience.



16-bit Precision Gray-Scale

Our screens use a 16-bit precision grayscale, delivering subtle and realistic color shading, making even the smallest details lifelike.



HDR (High Dynamic Range)

HDR increases the performance and image quality significantly. Instead of normal SDR with 256 levels of each color – you can achieve up to 1,024 levels of each color.



Accurate DCI-P3 Color Gamut

Accurate DCI-P3 Color Gamut gives you a full 100% compliance.



True Colors and Pure Black

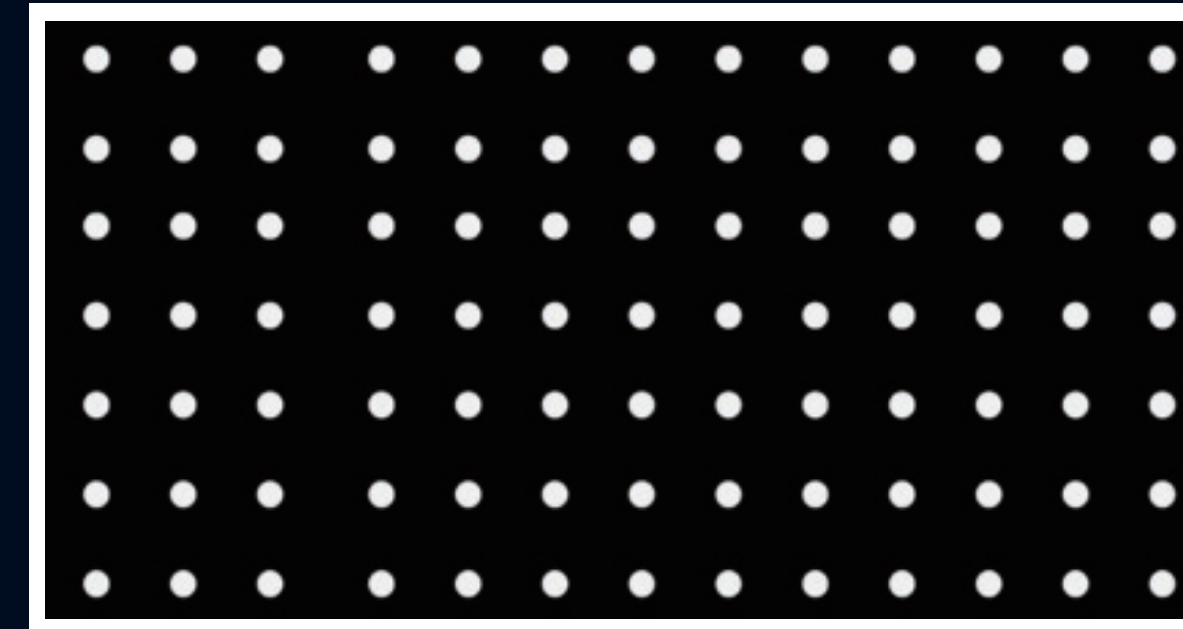
Experience deep, definitive black shades and an accurate color spectrum, creating an uninterrupted, cohesive image quality with true-to-life colors. Banding effects and lack of intensity resolution as seen on LCD displays and projectors are gone.

High Pixel fill

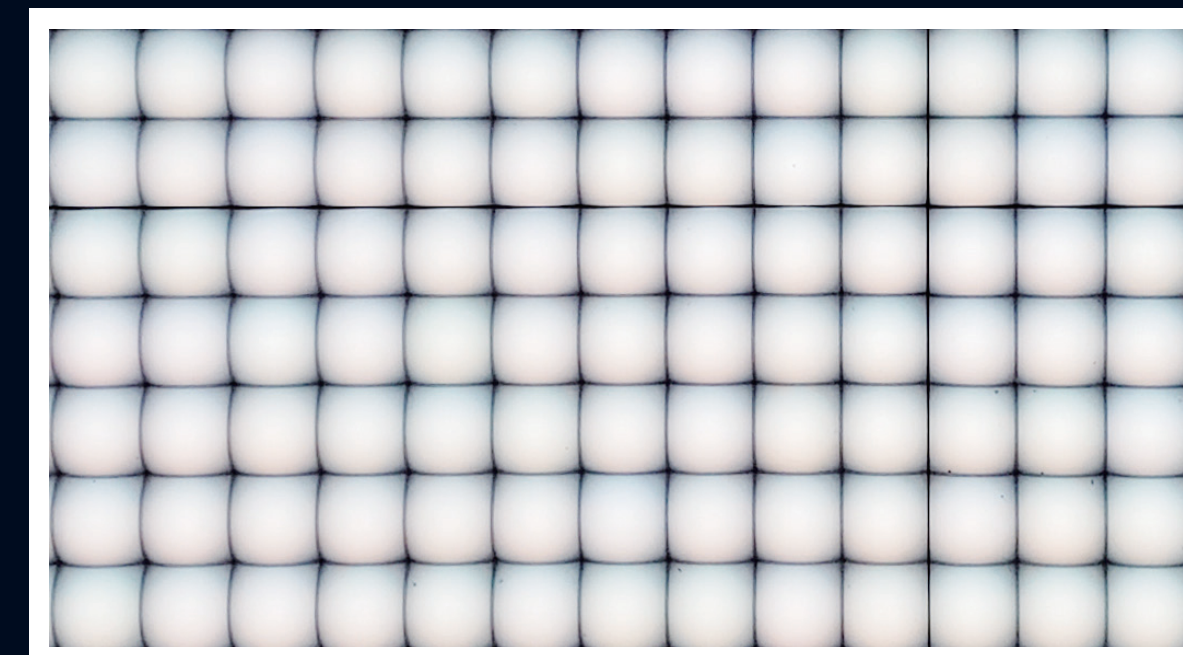
With a pixel fill factor of over 75%, our screens optimize image clarity and reduce visible pixel structure, contributing to a more cohesive viewing experience.

By enhancing the uniformity and brilliance of each image, we ensure that every scene is rendered with stunning detail and vibrant colors. Moreover, our innovative LED caps, which are instrumental in achieving this superior visual quality, are patented technology exclusive to our brand.

These advanced caps not only elevate performance but also set our displays apart in the market for their unmatched image precision and consistency.



Other LED fill factor > 15%



Our LED fill factor > 75%

Patents and Certificates

Expromo Cinema's digital LED cinema screen systems are patented and adhere to strict quality standards. A significant milestone is our DCI (Digital Cinema Initiatives) certification, which attests to our screens' capability to meet the high demands of modern cinemas. The DCI certification guarantees the highest standards in visual quality, security, and compatibility.

56

Patent



3D Glasses

25

Patent



3D Systems

15

Patent



Leasing Machine

105

Patent



LED

41

Patent



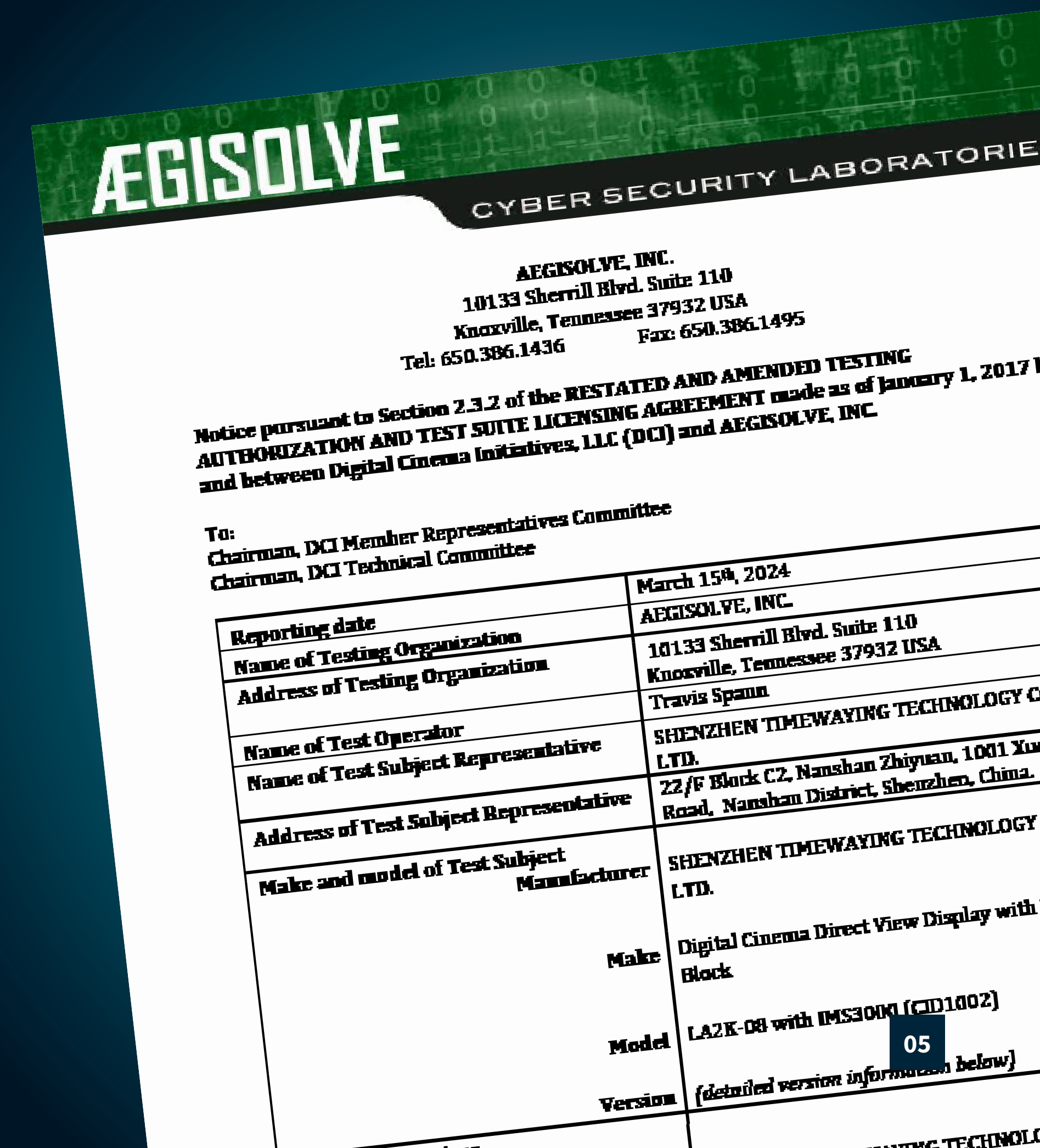
Nano Screen

8

Patent

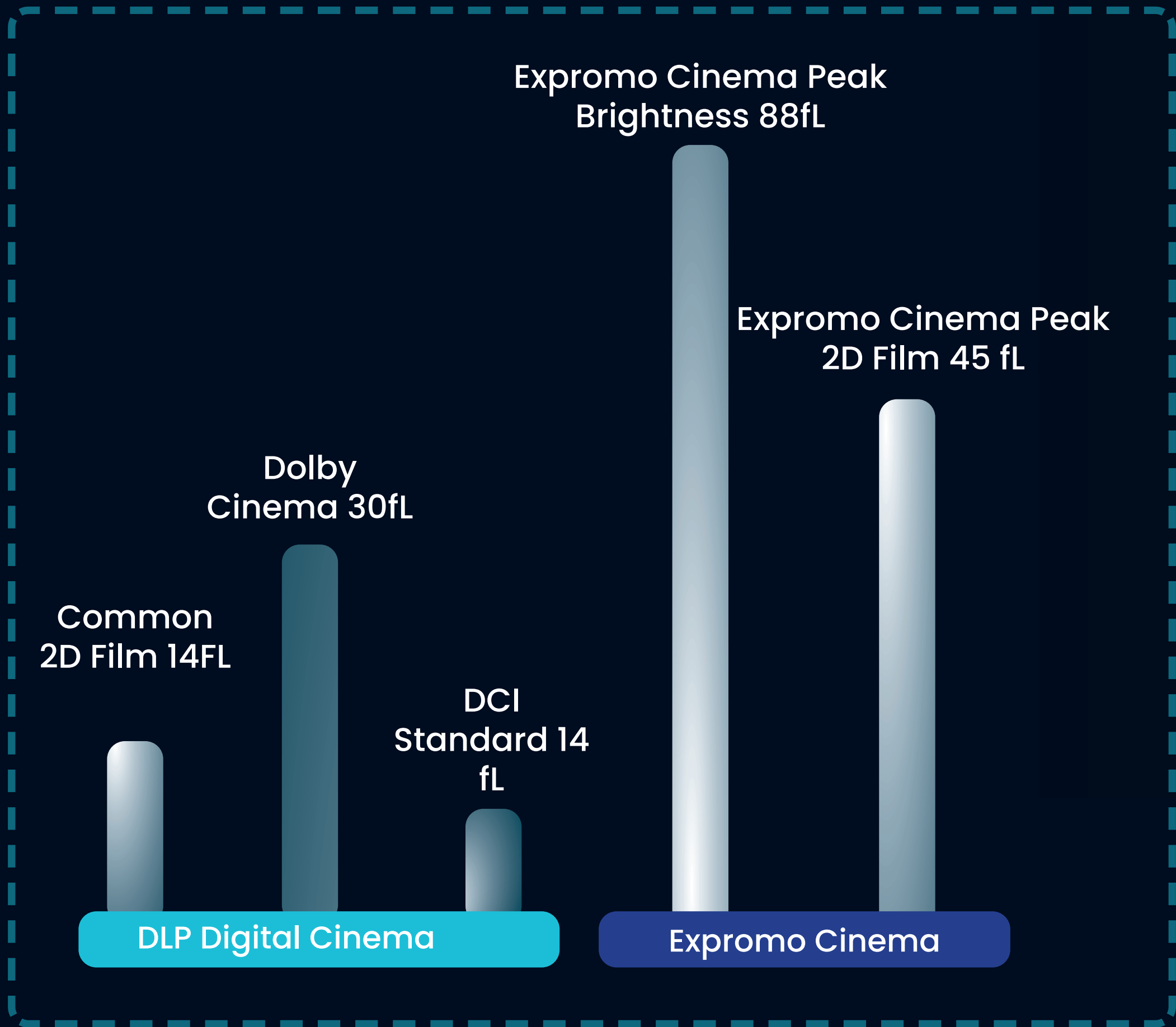


Application



Brightness LED VS DLP

2D Mode



3D Mode



DLP Screen VS LED Screen

DLP + Screen

- Bright, low brightness 30 ~100nit
- Black, not black enough Screen refelctivity
- Contrast Ratio Gain 2.0
- Viewing Angle 150 ~400
- 40°

VS

Expromo Cinema Screen

- Bright, high brightness 100 ~300nit
- Black, darker black Refelctivity
- Contrast Ratio "Gain" 0.1
- Viewing Angle 3,000 ~20,000
- 160°

Projector vs. LED Screen

Traditional cinema projectors have long been the standard, but with technological advancements, LED screens have now become the preferred choice for high-end cinema experiences.

Image Quality

The higher brightness and contrast of LED screens result in more dynamic and realistic image quality. HDR technology and a wider color spectrum ensure an enhanced visual experience.

Maintenance

LED screens generally require less maintenance compared to traditional projector-based systems. Projectors have a limited lamp life and may need frequent replacements and adjustments. In contrast, LED screens are designed for longer life and stable performance.

Space Utilization

LED screens allow for more flexible and space-efficient installations, which can increase the number of seats in a cinema as they do not require a dedicated projection room.

Sound

A complete cinema experience consists not only of visual quality but also of sound quality. At Expromo Cinema, we offer integrated sound solutions that match the high standards of our LED screens.



Dolby Atmos

Dolby has consistently been regarded as the de facto standard, and our sound systems are designed to comply with its requirements.



DTS:X

A competitor to Dolby is DTS. We fully support both, giving you the flexibility to choose the system that best suits your needs.



7.1 Surround Sound

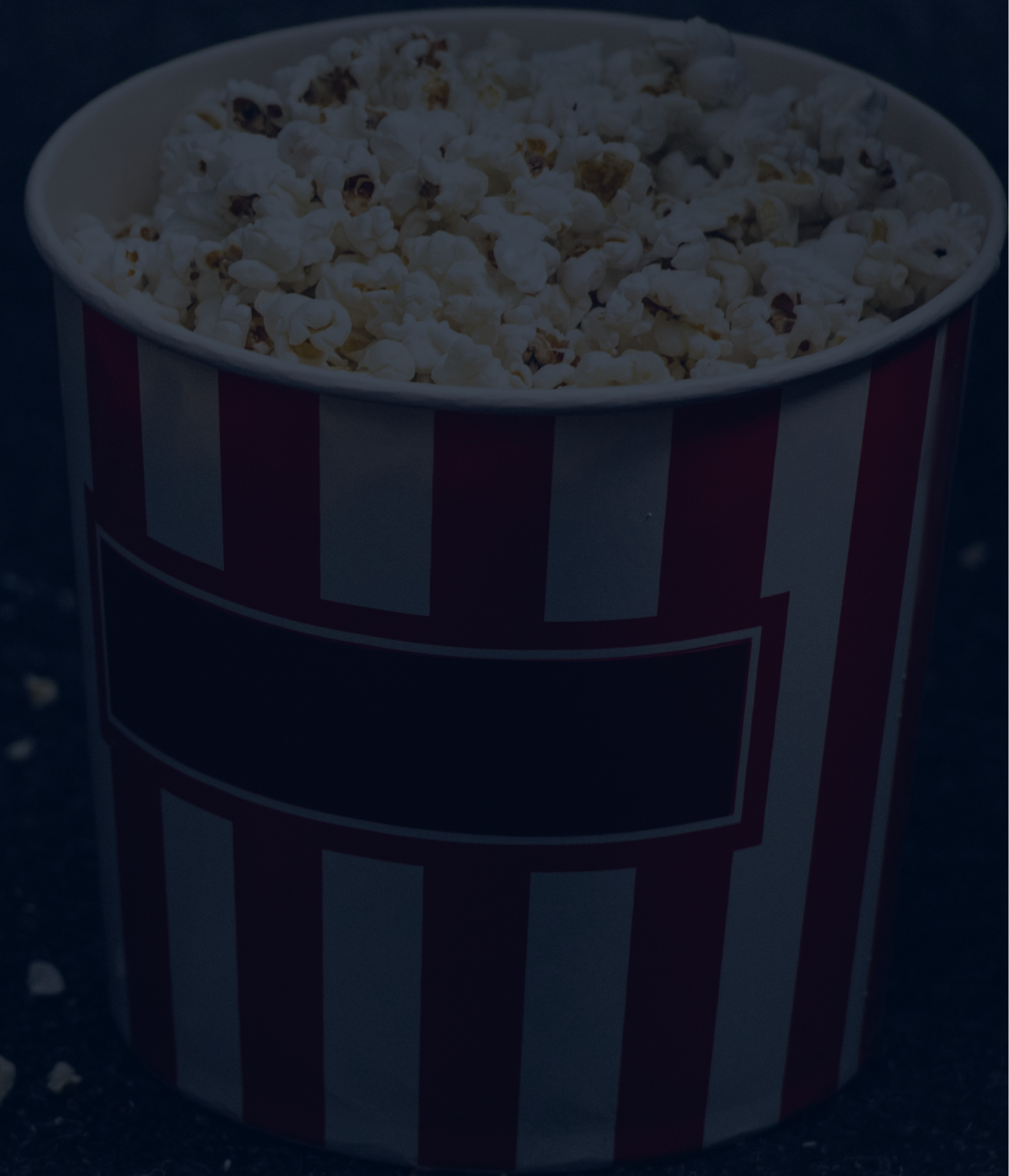
Backward compatibility is integrated.

Customized Solutions

We provide tailored installations that adapt to specific audio systems in your cinema, working closely with sound providers to ensure the best possible sound quality. This means that regardless of the sound system you already have installed, we can seamlessly integrate our solution.

Concluding Remarks

Expromo Cinema offers an unmatched cinema experience with our advanced LED screens and high-quality sound systems. Our products are designed to give movie lovers a deeper and more immersive experience, true to the filmmaker's original vision. With our DCI-certified technology and collaboration with leading sound providers, we are the ideal choice for any high-end cinema wanting to stand out.



Pixel & Module	Pixel pitch (mm)	3.91	4.81	3.91	4.81
Physical	Display size (W x H)	8 x 4.5m	10 x 5.5m	16 x 8.5m	20 x 10.5m
	Weight (kg)	1,080kg	1,700kg	4,080kg	6,510kg
	Cabinet size (W x H)	1 x 0.5m			
	Contrast Ratio	30000 : 1			
	Maintenance	Rear Maintenance			
Electrical	Input voltage (nominal) [VAC]	100 ~ 240 VAC 50/60Hz			
	Max Consumption	3,360W	5,060W	12,700W	19,320W
	Average Consumption 48nits	1,230W	1,320W	4,650W	5,040W
	Certification	DCI, CCC, CE/ UL, EMC Class A, Safety 60950 - 1			
	LED Life time (hrs)	100,000 (half brightness)			
	External Part	HDMI 2.0, 2D			
Approvals & Environmental	Protection level [IP]	31			
	Operating temperature / Humidity	0°C ~ 40°C / 10 ~ 80% RH			
	Storage temperature / Humidity	- 20° ~ 45° / 5 ~ 95% RH			
Video	Resolution (W x H)	2,048 x 1,080	2,048 x 1,080	4,096 x 2,160	4,096 x 2,160
	Viewing angle	160°H / 160°V			
	Brightness (Adjustable)	48nits / 150nits / 300nits			
	Refresh Rate	1500 to 9300Hz			
	Grayscale	R,G,B 16Bit			
	Color Gamut	100% DCI-P3			
	2D Frame Rate	24, 25, 30, 48, 60, 120 fps			
	3D Frame Rate	24, 30, 48, 60 fps	24, 48, 60 fps	24, 28, 60 fps	24, 28, 68 fps
	Video Format Grayscale	DCP (12bit XYZ), Digital Coding JPEG2000			