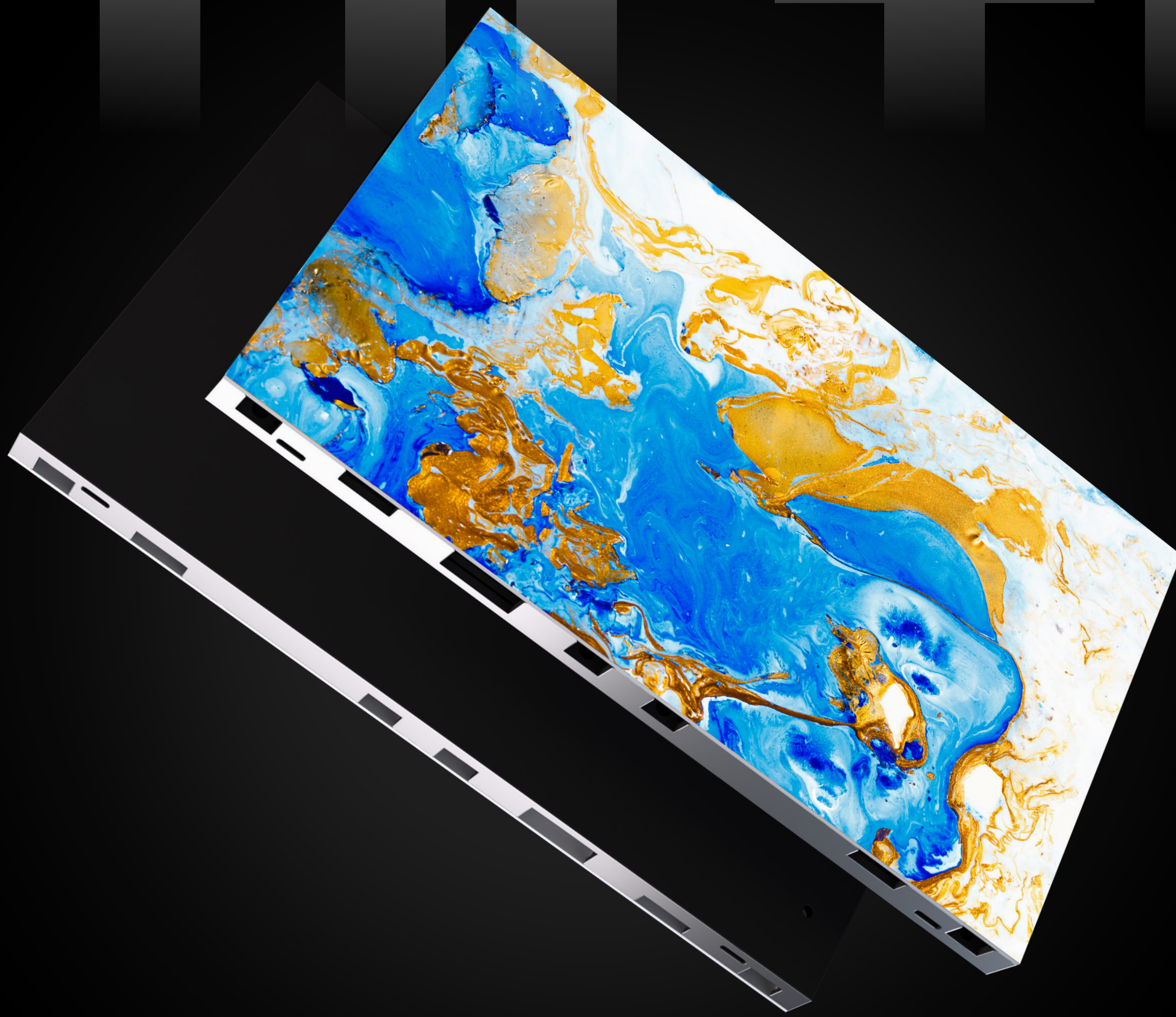


ULTRA



expromo[®]

ULTRA series

The ultimate screen companion
with high-end COB Technology



ULTRA

The EXPROMO ULTRA series is a high-end product series with high resolution and several unique features and performances. This product is for installations where the demand for very high requirements for the overall installation and performance are required.



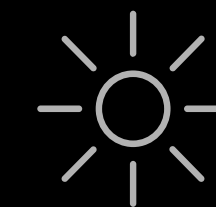
Conference



Indoor



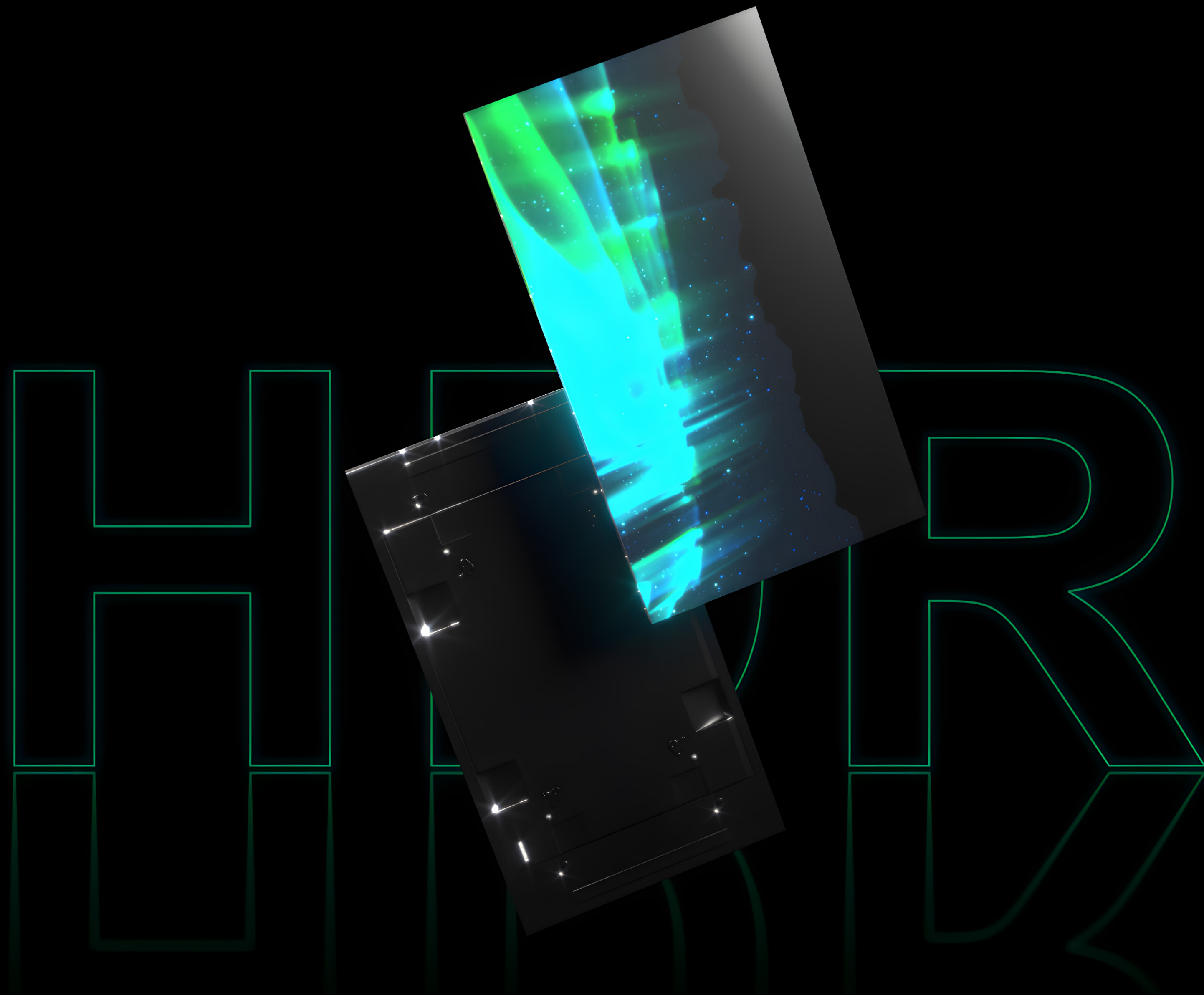
0.4-0.7 m



800 nits

A HIGH-END SOLUTION

- Unlimited Resolutions
- HDR⁺ 22 bit color
- SPT (Surface Protection Technology)
- Deep Blacks
- True Front Service
- COB Technology (0.7, 0.9, 1.2, 1.5)
- Expromo Easy Power™





COB (CHIP-ON-BOARD)

Discover the advantages of COB technology in our LED displays, designed with a “COB closed surface ultimate black” for outstanding contrast and clear color definition.

Amazing Contrast & Blacks:

Experience ultra-deep blacks for vivid, dynamic visuals

Premium Selectivity:

At Expromo, we meticulously select top-grade raw materials. Our high-selectivity process ensures only the finest diodes are utilized, providing superior display durability and consistency.

Clear Image Quality:

Enjoy sharp images with smooth colors and less glare.

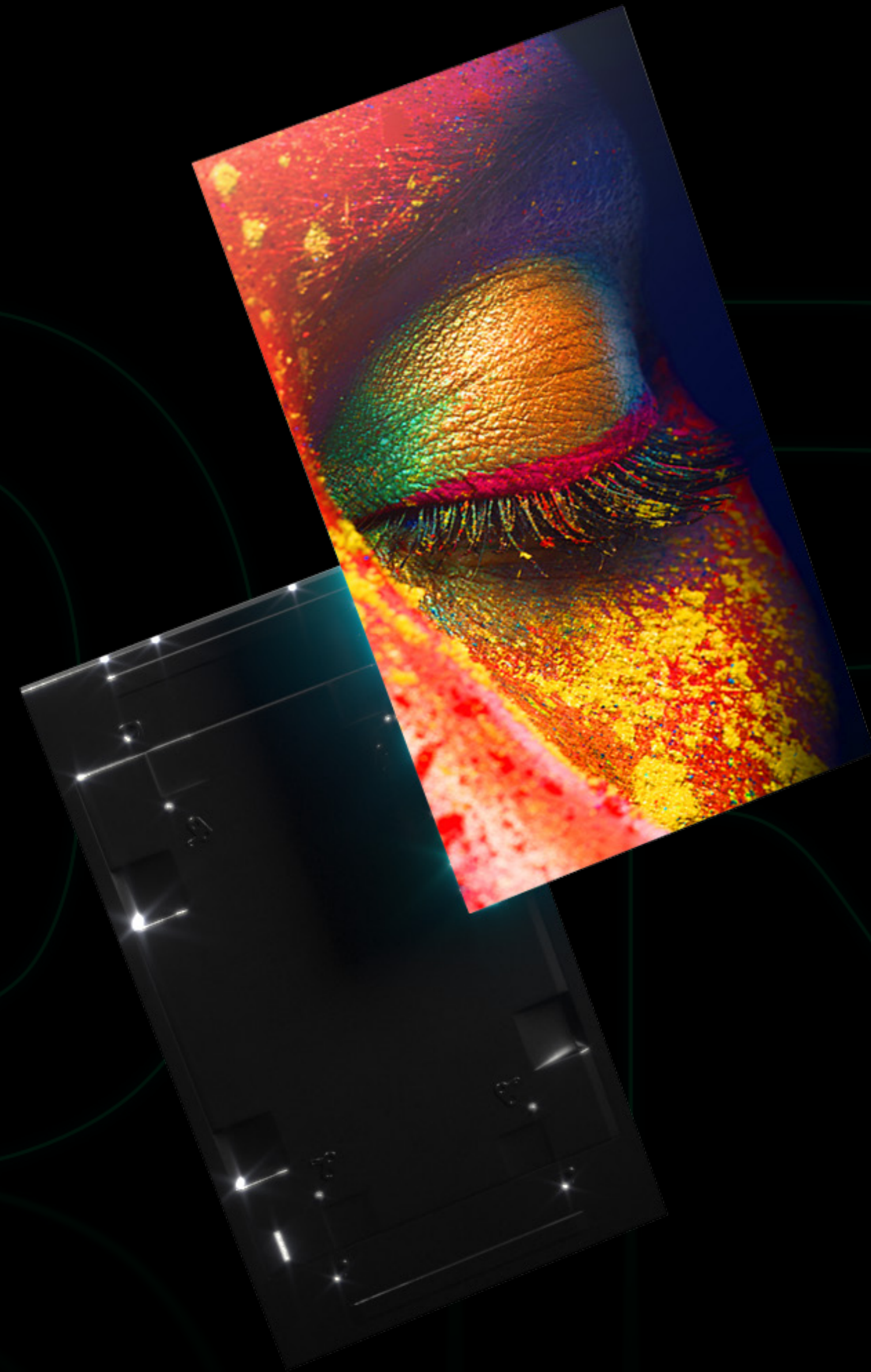
Choose Expromo’s high-end COB for the ultimate in LED display excellence and precision

HIGH DYNAMIC RANGE

Discover ultimate image precision with the ULTRA Series LED displays. Harnessing advanced HDR (High Dynamic Range) and 22-bit+ processing, these displays offer up to 1,024 levels per color. This results in exceptional shadow detail and highlights, enhancing realism and depth.

With over 16 times more colors than standard SDR displays, the ULTRA Series ensures smooth color gradations and vibrant, true-to-life visuals. Whether in bright or low-light environments, experience consistent color accuracy and dynamic contrast, elevating your content to professional standards of clarity and brilliance.

- **1,024 Color levels:**
Delivers finely detailed shadows and highlights.
- **22-bit+ Processing:**
Experience over 16 times more colors.
- **Enhanced HDR Technology:**
Superior dynamic range for lifelike imagery.
- **Consistent Performance:**
Brilliant visuals under varied lighting conditions.
- **Professional Clarity:**
Ideal for applications where precision is key.





UNLIMITED RESOLUTIONS

Dreaming of a 52K screen?

Step into a new era of visual excellence with our advanced display technology, offering the potential for unlimited resolutions. This cutting-edge screen transforms your content with unparalleled clarity and precision. Whether streaming or engaging with complex graphics, this technology provides an exceptionally detailed visual experience, utilizing significantly more pixels than standard Full HD displays.

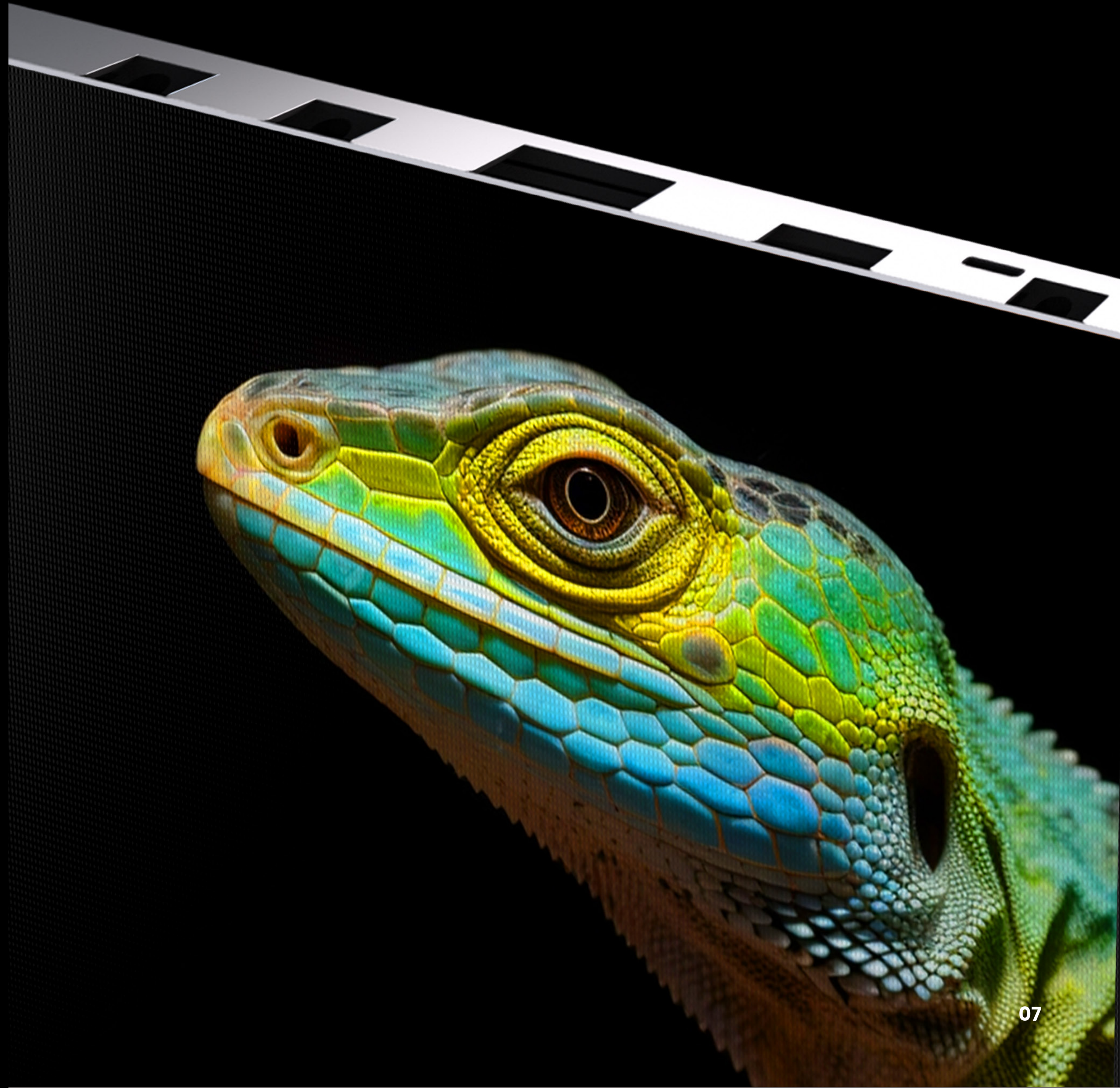
Prepare to immerse yourself in vibrant colors and deep contrast that bring even the smallest details to life. Experience sharper images and a level of visual fidelity that enhances every task and project, setting a new standard for excellence in visual display.



DEEP BLACKS

Experience the profound depth of true black with Expromo ULTRA's advanced display technology. Our Deep Blacks are engineered to achieve the richest shades of black, surpassing conventional black tones to bring unparalleled contrast to your screen. This enhancement not only elevates the visual intensity but also sharpens every detail.

Grayscale technology in modern displays refers to adjusting light intensity in individual pixels, enhancing image detail and contrast. The 22-bit Grayscale processing offers up to 1,024 per color channel, vastly exceeding the typical 256 levels found in standard displays. This precision enables superior shadow detail and granularity, allowing for richer, more lifelike images and a true representation of visual nuances across various lighting conditions. By leveraging all these grayscale levels, our displays achieve smoother transitions and sharper contrast, elevating overall visual fidelity.



SURFACE PROTECTION TECHNOLOGY

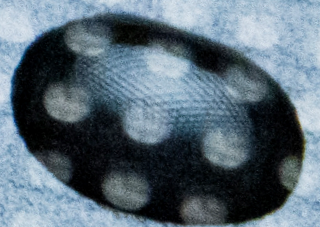
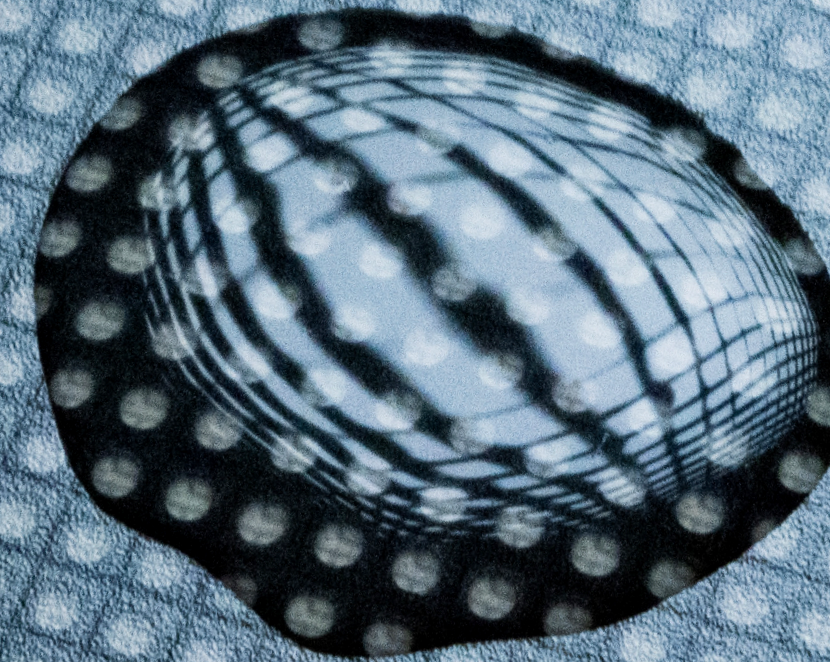
What is SPT™

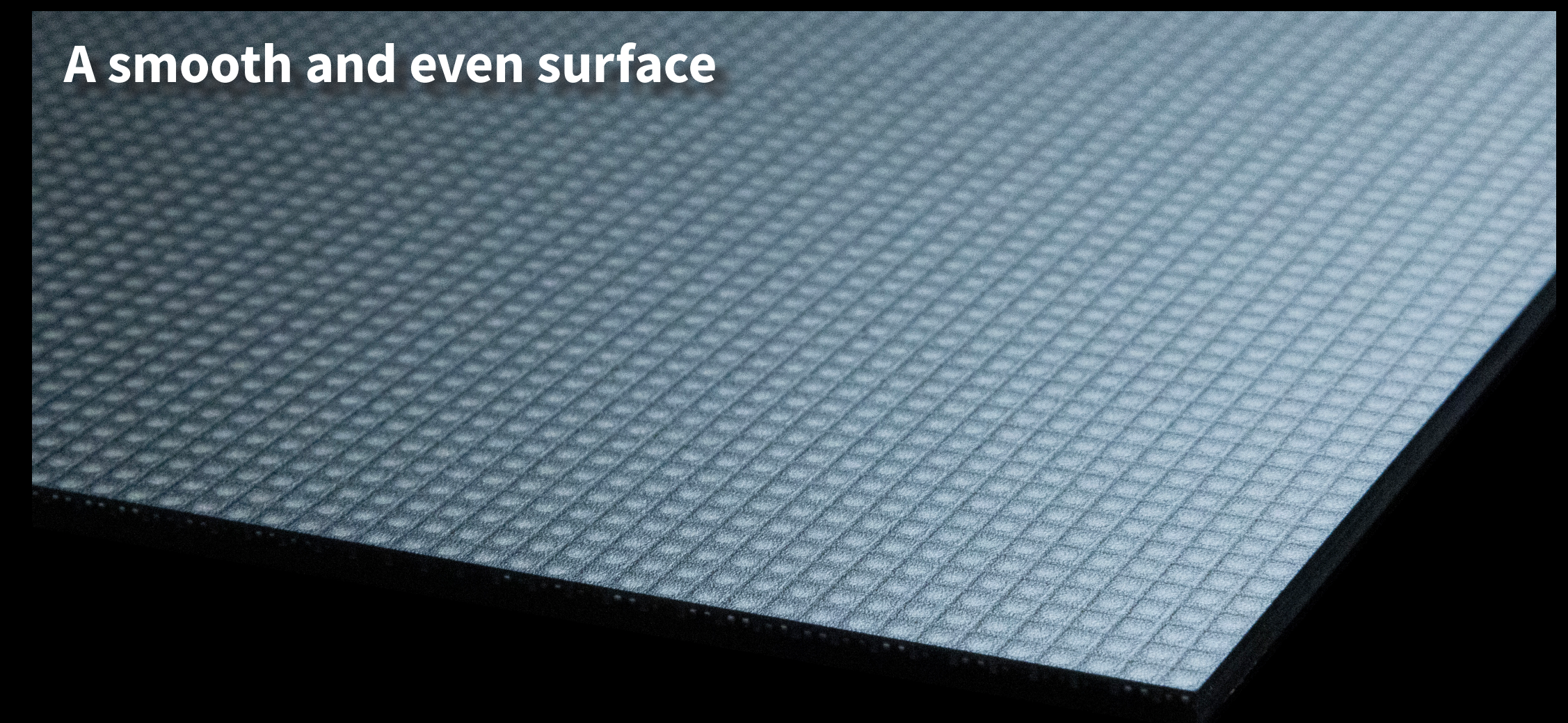
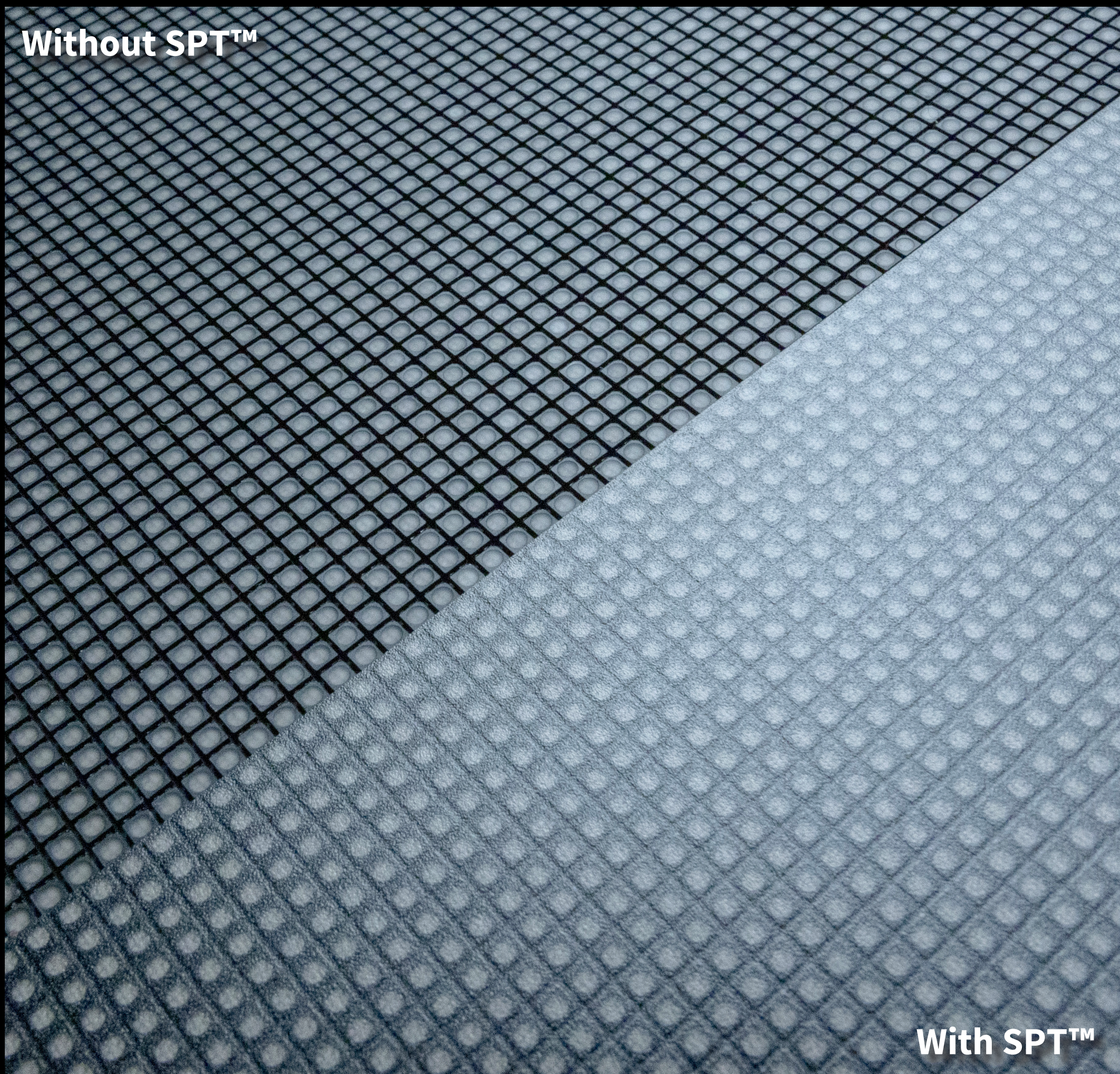
Standard LED screens have pixels mounted on a Printed Circuit Board (PCB) using solder. The solder makes the electrical connection so that the pixels can show video and images on the screen.

Since the solder is small, the pixels can be damaged when handling the screen. This can be avoided when adding Expromo SPT™.

SPT™ protects the pixels and makes the surface smooth. It can even resist liquids, and be dried off using a wet cloth.

- . Strong and rugged design for exceptional durability
- . Smooth even surface, easy to keep clean
- . Withstands liquid splashes





OUR RESPONSIBILITIES

At Expromo Europe, we are committed to reducing waste, emissions, and hazardous materials through sustainable practices and Cradle-to-Cradle principles. Using 100% wind energy, we focus on minimizing resource use and invest in renewables, while supporting electric vehicle adoption.

We foster ethical, inclusive workplaces prioritizing employee well-being and transparency through strong social policies.



OUR SERVICE

At Expromo Europe, we are committed to providing comprehensive service through every stage—from initial concept to full implementation and beyond. Our dedicated support team is always on hand to address your needs, ensuring seamless operation and continual satisfaction.

With customizable service agreements, 24/7 support options, and inclusive warranties, we prioritize smooth continuity and the highest level of customer satisfaction, ensuring your success every step of the way.